

# BIG DATA & INNOVATION

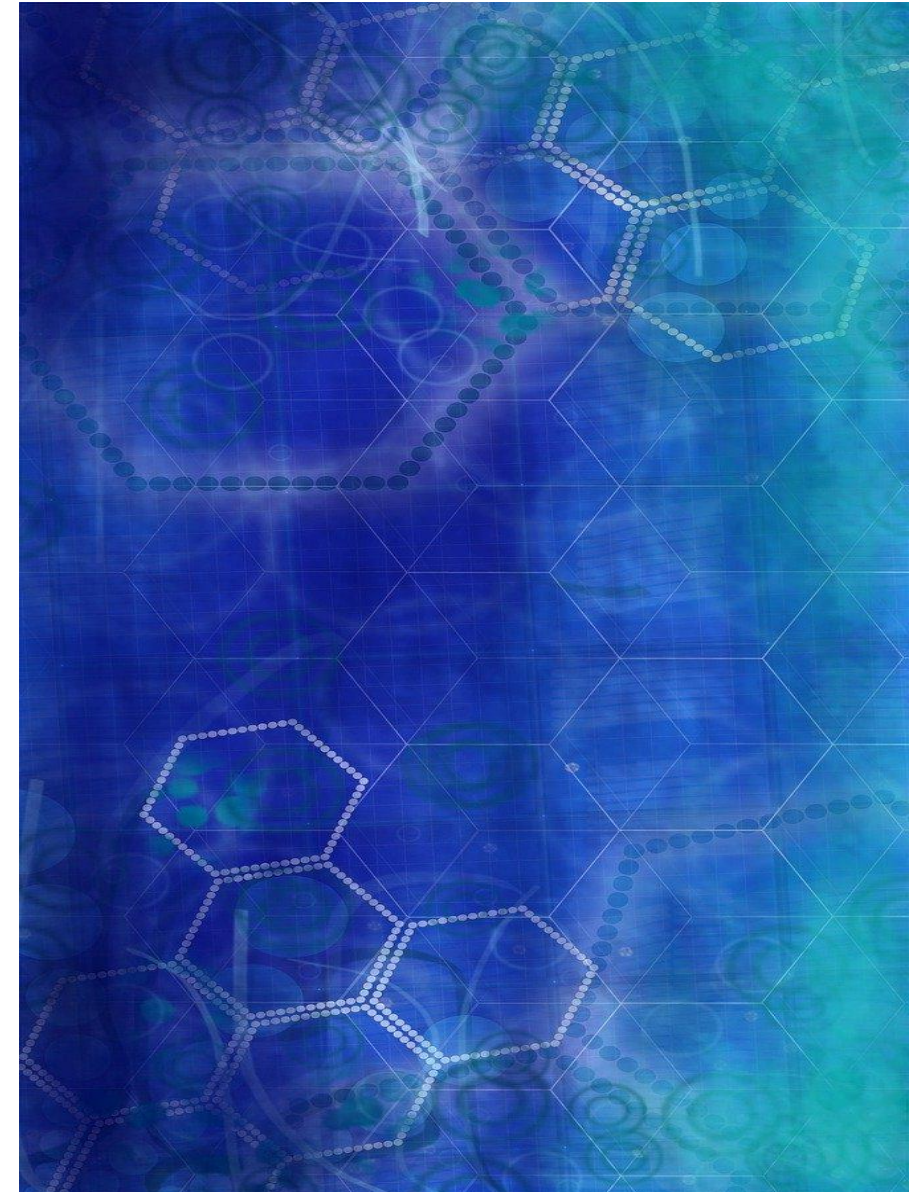
## Supporting IOM programming and policy

*EMN Georgia and EMN Estonia Joint Conference (20.09.22)*  
*“Advancing Data-Driven Decision-Making in Migration Management” -*  
*SESSION II. Analytical Systems*

- Global Data Institute (GDI-GMDAC)
- Data Analysis and Innovation Unit
  - Improve our analysis
  - Use non-traditional data sources
  - Explore mobility forecasting
  - Build partnerships
- Big Data for Migration Alliance

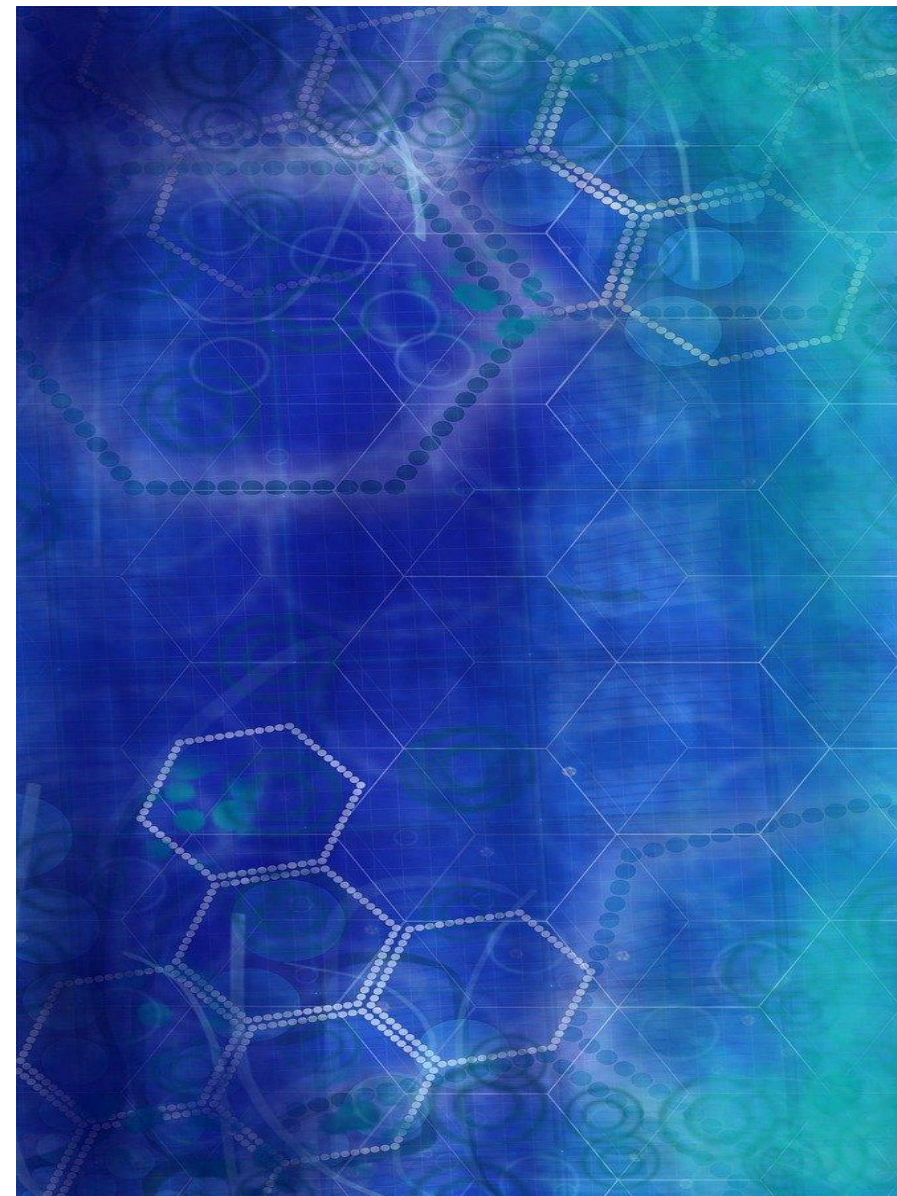


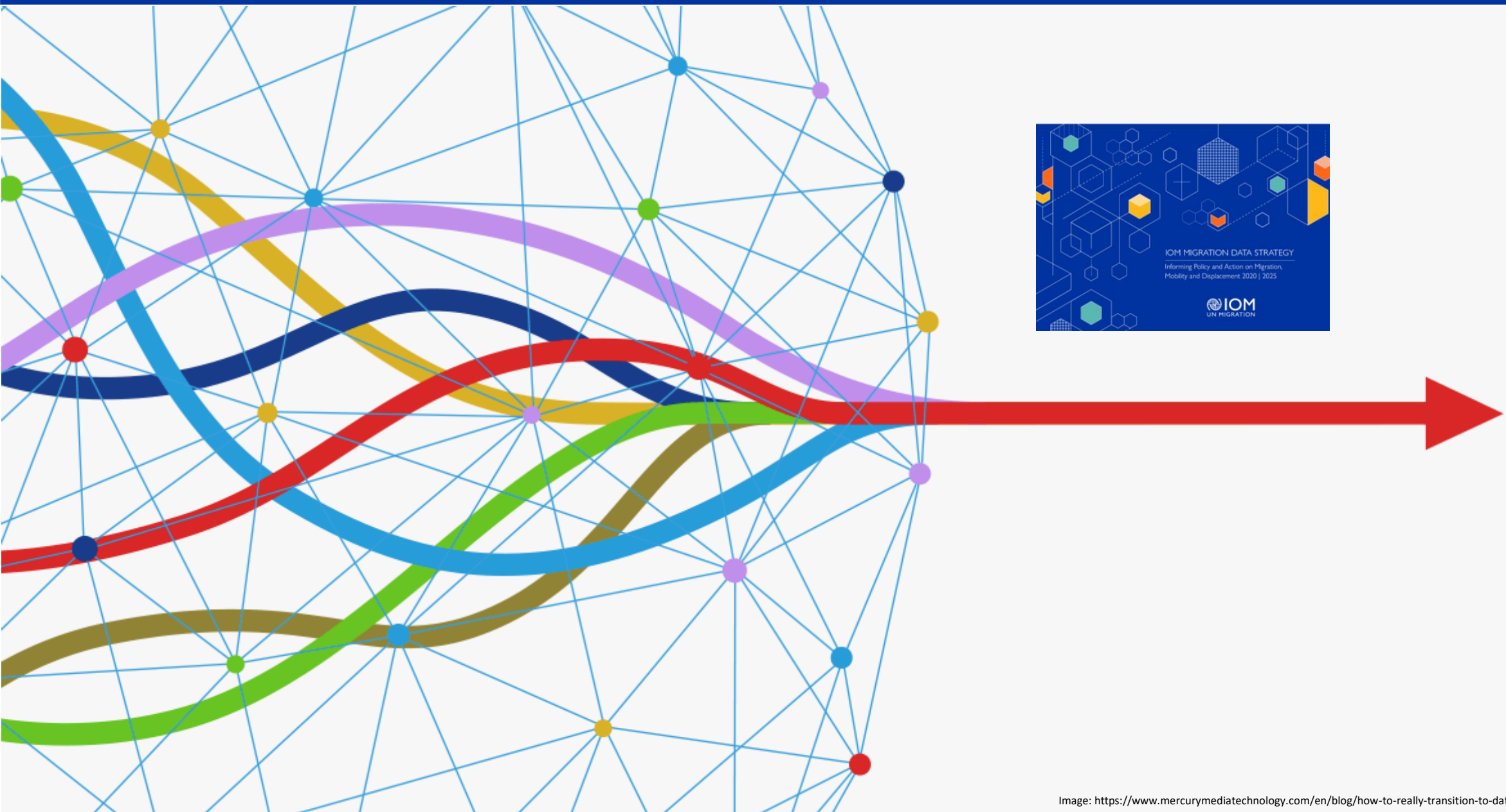
BIG DATA FOR MIGRATION ALLIANCE

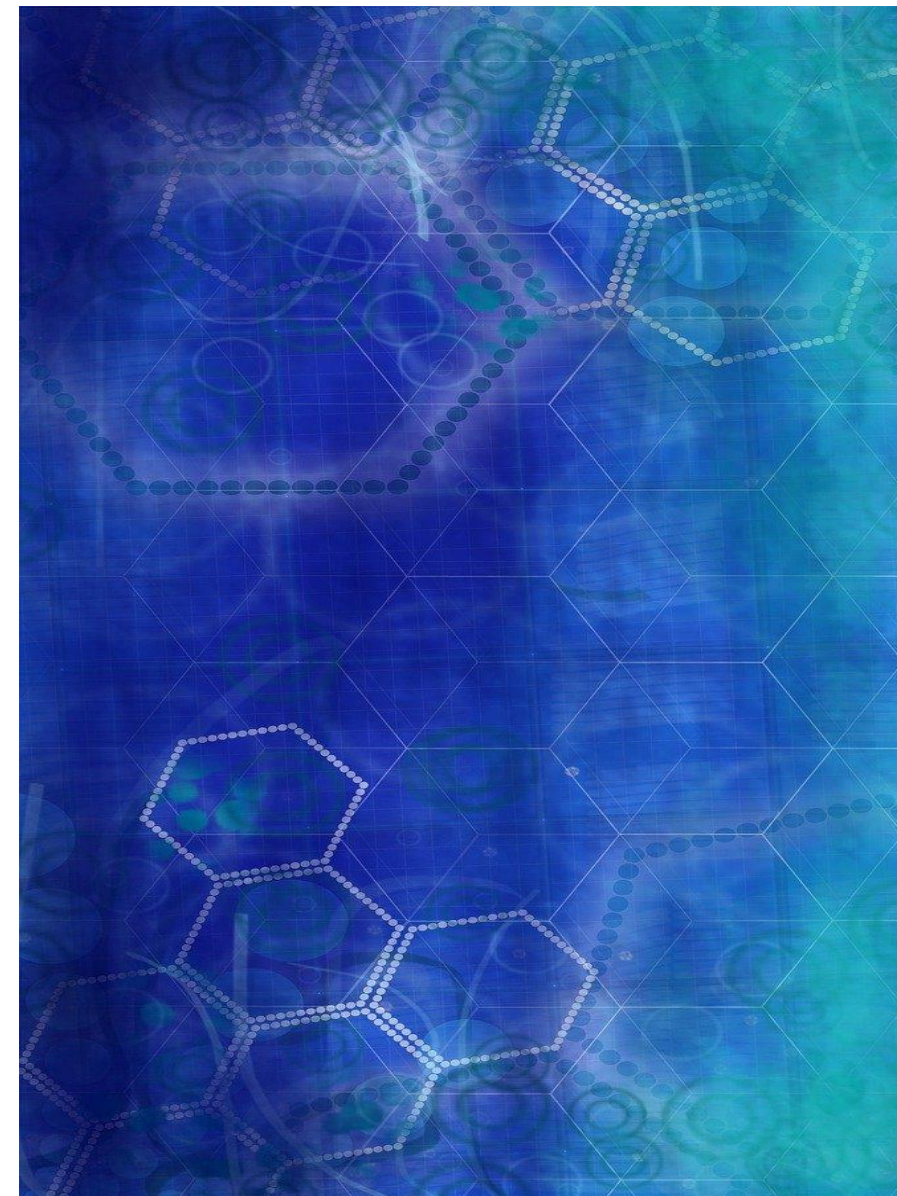
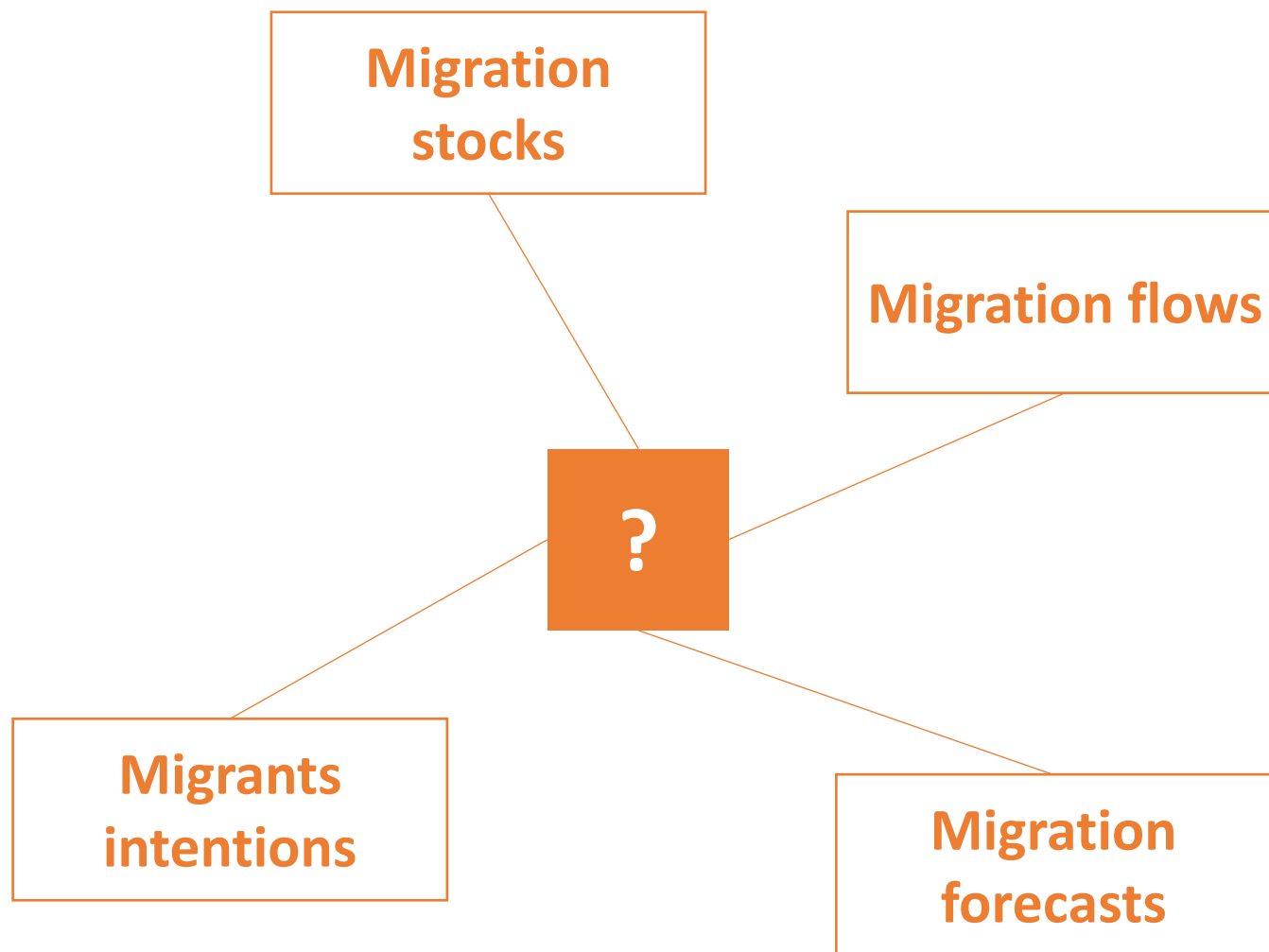


## IOM data driven decision making process...

...starts with a data collection and analysis capacities:





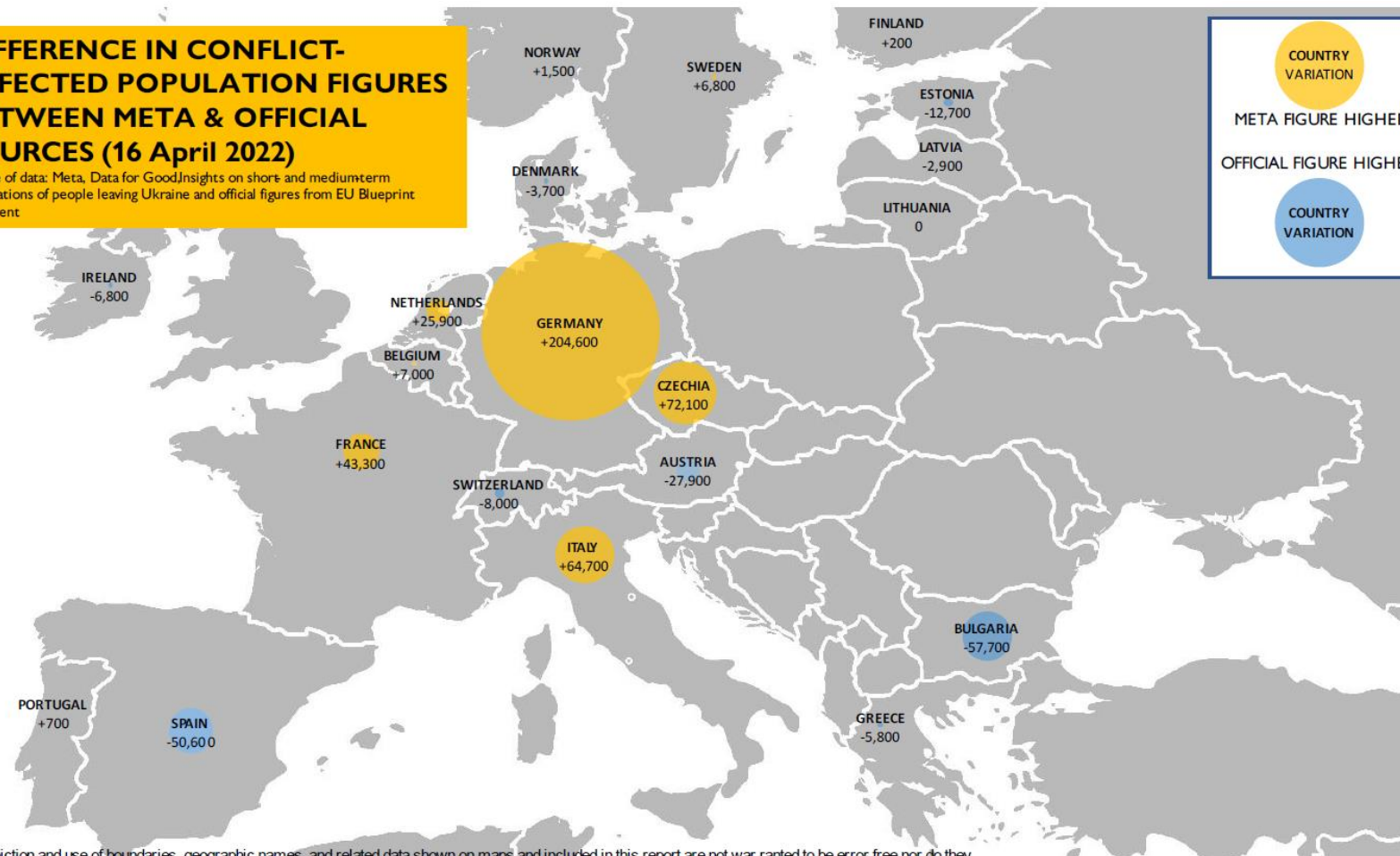


# Big data and innovation



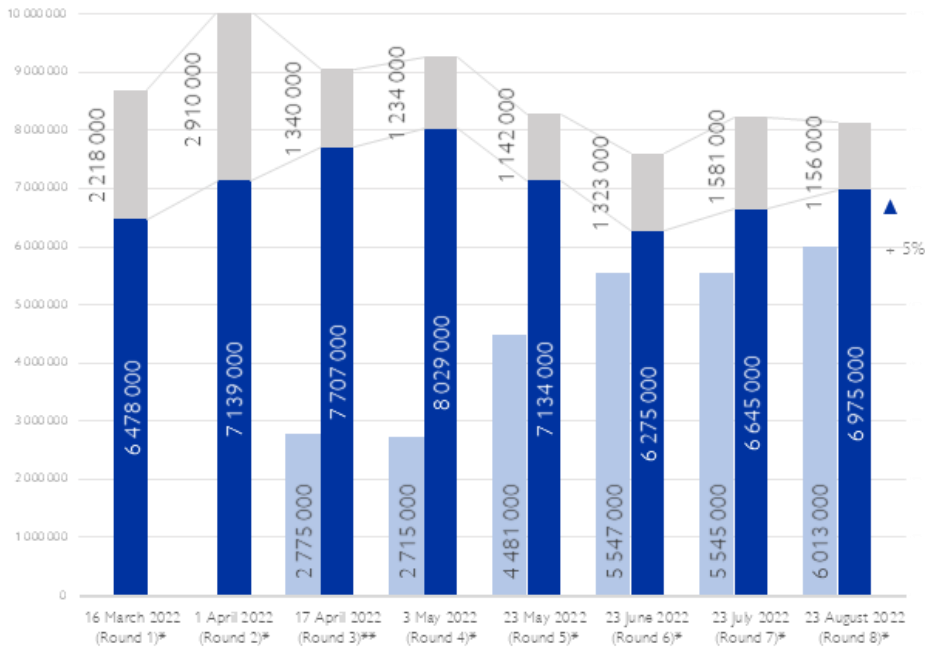
# Meta - Estimating of population who left Ukraine in Europe

**DIFFERENCE IN CONFLICT-AFFECTED POPULATION FIGURES BETWEEN META & OFFICIAL SOURCES (16 April 2022)**  
 Source of data: Meta, Data for GoodInsights on short- and medium-term destinations of people leaving Ukraine and official figures from EU Blueprint document.



The depiction and use of boundaries, geographic names, and related data shown on maps and included in this report are not warranted to be error free nor do they

# Computer Assisted Telephone Survey – Estimating internal displacement in Ukraine

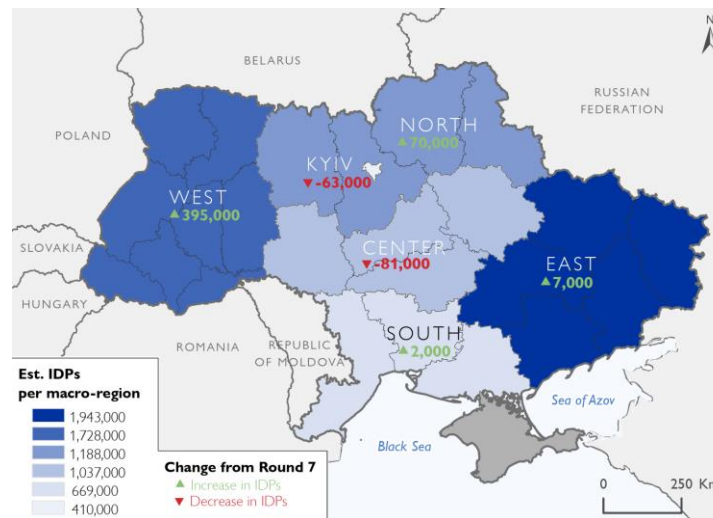


Actively **consider leaving** their place of habitual residence due to war (non-displaced population only)

Est. IDPs in Ukraine

Est. returnees in Ukraine

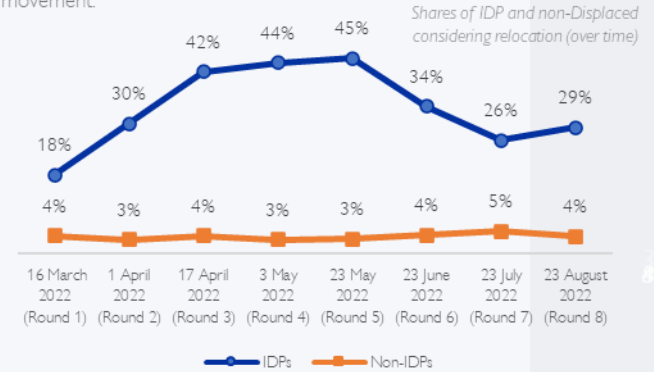
**6,975,000**  
EST. INTERNALLY  
DISPLACED  
WITHIN UKRAINE AS  
OF 23 AUGUST 2022



## FURTHER MOBILITY INTENTIONS

Following two months of decrease in the overall readiness for further mobility among IDPs in Ukraine, **once again, a larger share (29%, compared to 26% in July)** of IDPs are weighing the possibility of leaving their current location. Among those Ukrainians who remain in their habitual places of residence, the share of people considering relocating remains relatively small and stable (4%).

Between IDPs in the North, 38% intend to move further (any direction, including possible return), as do 37% of IDPs in the West macro-region, 29% of IDPs in the South, and 23% in the East. 20% of IDPs in Centre and 15% of IDPs in the Kyiv macro-region now indicate an intention of further movement.





# Ethics



THANKS!